



February 1, 2025

Dear Parents and Community Members:

We are pleased to present you with the Annual Education Report (AER), which provides key information on the 2023-24 educational progress for iCademy Global. The AER addresses the complex reporting information required by federal and state laws. The school's report contains information about student assessment, accountability, and teacher quality. If you have any questions about the AER, please contact Reid Nicholson for assistance.

The AER is available for you to review electronically by visiting the following website [MI School Data](#), or you may review a copy in the main office at your child's school.

For the 2024-25 school year, schools were identified based on previous years' performance using definitions and labels as required in the Every Student Succeeds Act (ESSA). A Targeted Support and Improvement (TSI) school is one that had at least one underperforming student subgroup in 2023-24. An Additional Targeted Support (ATS) school is one that had a student subgroup performing at the same level as the lowest 5% of all schools in the state in 2021-22. A Comprehensive Support and Improvement (CSI) school is one whose performance was in the lowest 5% of all schools in the state, had a graduation rate at or below 67%, or failed to exit ATS status in 2021-22. Some schools are not identified with any of these labels. In these cases, no label is given.

Our school was identified as a Comprehensive Support and Improvement School.

Our math proficiency goal for 2027 is to meet the state target of 43.94. We went down .07% in the 23-24 school year. To meet this student achievement target we are continuing to; adjust instruction to meet the needs of our learners and fill in any of their math content gaps, professional development geared toward student achievement and best practices, tutoring sessions available for all students, math intervention support based on the MTSS tiered systems of support, supplementary instructional tools, and the 23g Expanded Learning Time Grant. Math proficiency will continue to be an area of focus.

State law requires that we also report additional information.

1. PROCESS FOR ASSIGNING PUPILS TO THE SCHOOL

iCademy Global has an open enrollment policy and does not discriminate on the basis of intellectual or physical abilities, achievement or aptitude, religion, race, or gender. In the event student enrollment applications exceed available positions, a random

selection lottery drawing is conducted under the direction of a representative of the authorizer Lake Superior State.

2. THE STATUS OF THE 3-5 YEAR SCHOOL IMPROVEMENT PLAN

We have met our goal of meeting the Graduation Rate State Target for the 23-24 school year. The state target is 94.4% and iCademy Globals graduation rate for the 23-24 school year was 98.09%.

3. A BRIEF DESCRIPTION OF EACH SPECIALIZED SCHOOL

Not Applicable

4. IDENTIFY HOW TO ACCESS A COPY OF THE CORE CURRICULUM, A DESCRIPTION OF ITS IMPLEMENTATION, AND AN EXPLANATION OF THE VARIANCES FROM THE STATE’S MODEL

Our core curriculum is published in both our Family Resource Guide and on our website. Any questions or concerns can be directed to Reid Nicholson, administrator. iCademy Global will continue to follow Common Core state standards. These standards can be located at www.corestandards.org. To implement these standards, we use the Lincoln Learning platform as our approved resources where we build from Explore (k-5), Experience (6-8), to Engage (9- 12) as students grow throughout our k-12 program. In addition, students have an opportunity to connect to the community through The Community Passport Program. It is an excellent, low risk opportunity for students to pursue new skills they may not otherwise have the time to try. Students choose an activity in Art, Music, or P.E. in their community for course credit combined with online content throughout the semester.

To strengthen our academic program, iCademy Global implements additional student opportunities, such as Multi-Age Collaboration, Nature-based curriculum through a partnership with Outdoor Discovery Center, Stewardship, and Capstone Trips: Extended Field Experiences.

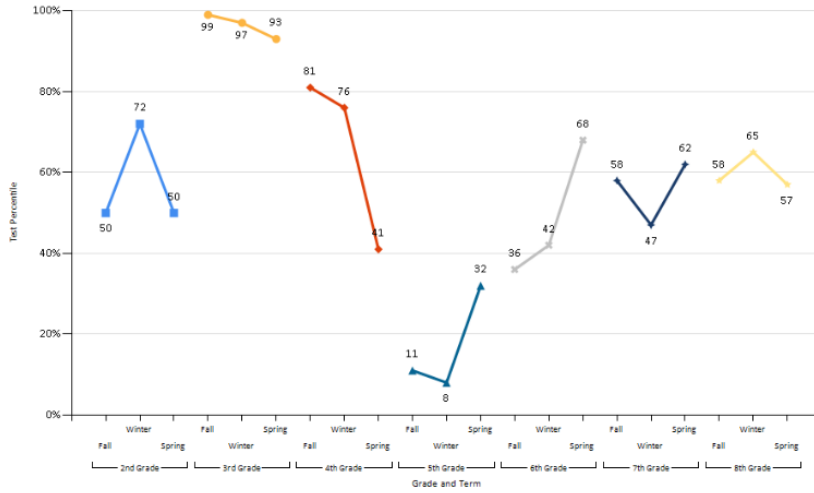
iCademy Global offers a high quality, college and career-ready education within an environment that focuses on the development of the whole child and integrates global awareness and acquisition of 21st Century Skills. Our students will graduate from high school and participate in post-secondary education having demonstrated the skills needed to become an active and productive citizen in a global community.

5. THE AGGREGATE STUDENT ACHIEVEMENT RESULTS FOR ANY LOCAL COMPETENCY TESTS OR NATIONALLY NORMED ACHIEVEMENT TESTS

MAP National Percentile - District

District: iCademy Global
School Year: 2023-2024

Subject: Mathematics
Full Academic Year: Yes

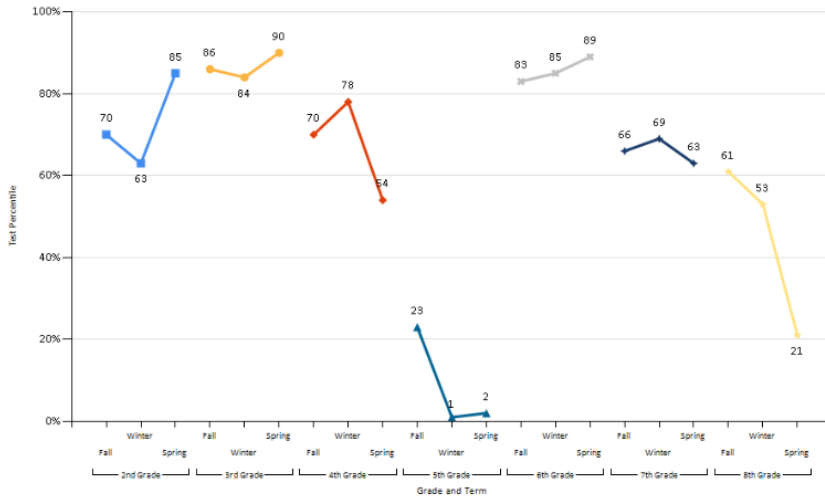


Printed on 2/9/2025 by Marty Lappe

MAP National Percentile - District

District: iCademy Global
School Year: 2023-2024

Subject: Reading
Full Academic Year: Yes

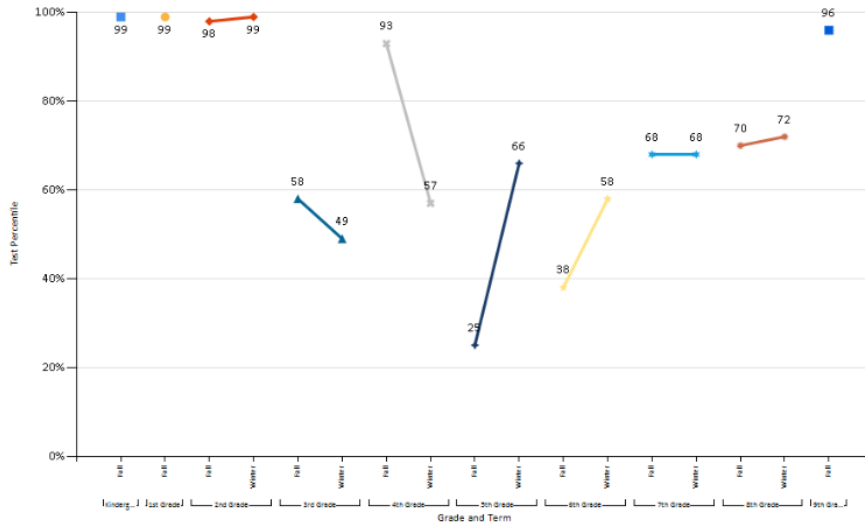


Printed on 2/9/2025 by Marty Lappe

MAP National Percentile - District

District: ICademy Global
School Year: 2024-2025

Subject: Mathematics
Full Academic Year: No

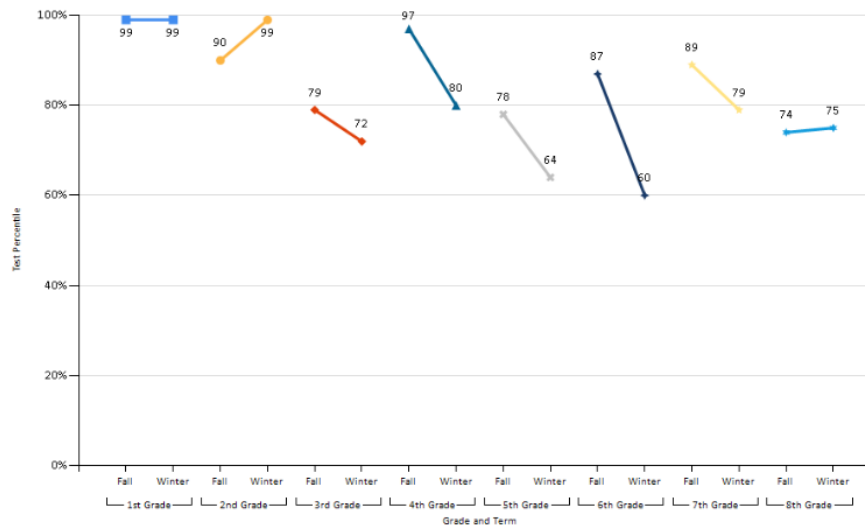


Printed on 2/9/2025 by Marty Lappe

MAP National Percentile - District

District: ICademy Global
School Year: 2024-2025

Subject: Reading
Full Academic Year: No



Printed on 2/9/2025 by Marty Lappe

6. IDENTIFY THE NUMBER AND PERCENT OF STUDENTS REPRESENTED BY PARENTS AT PARENT-TEACHER CONFERENCES

Conferences for students in grades 6-8 were attended by 90% of all families. Our goal for middle school participation is 100%.

Conferences for students in grades K-5 were attended by 100% of the guardians. The expectation for K-5 is 100% attendance as the guardians are the learning coaches.

We plan to maintain/increase conference attendance through communication efforts: weekly school email, mentor emails and reminders; by offering: morning, afternoon, and evening sessions, and mentors reaching out individually to families who do not sign up or who miss their scheduled appointments (email/ text/ phone call). In middle and highschool, we have conference attendance as a required assignment.

Conferences for students in grades 9-12 were attended by 87% of guardians. Our goal is to increase the participation to 90%. We plan to do this through communication efforts, morning, afternoon, and evening sessions, and by reaching out individually to families who do not sign up or who miss their scheduled appointments.

7. FOR HIGH SCHOOLS, ONLY ALSO REPORT ON THE FOLLOWING:

- a. THE NUMBER AND PERCENT OF POSTSECONDARY ENROLLMENTS (DUAL ENROLLMENT)

For dual enrollment in 23/24 we had 7 first semester and 6 second. In 24/25 we had 8 enrollments first semester and 12 second semester.

- b. THE NUMBER OF COLLEGE EQUIVALENT COURSES OFFERED (AP/IB)

We are a 0 for AP/IB.

- c. THE NUMBER AND PERCENTAGE OF STUDENTS RECEIVING A SCORE LEADING TO COLLEGE CREDIT

In the 23/24 school year, we had 13 students who took courses leading to college credit (CTC).

In 24/25, we have 14 students who took courses leading to college credit (CTC).

On behalf of the iCademy Global staff, we would like to thank all of those who have helped make our school an amazing place for children to learn. Your patience, persistence, and willingness for change made this year possible.

Sincerely,



Reid Nicholson

School Administrator